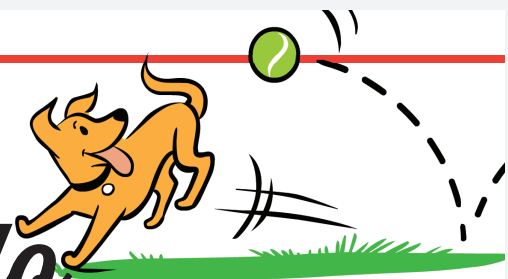


FUN IN THE SUN

with Fido

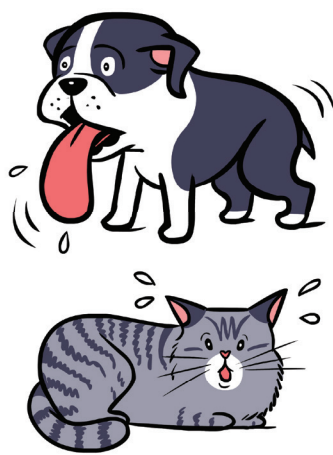


What is HEATSTROKE? Heatstroke occurs when normal body mechanisms can't keep the body's temperature in a safe range. Animals don't have efficient cooling systems like humans (who sweat) and can get overheated easily.

SIGNS OF HEATSTROKE

IN DOGS

- rapid breathing
- bright red tongue
- red or pale gums
- thick, sticky saliva
- depression
- weakness
- dizziness
- vomiting
- diarrhea
- shock/coma



IN CATS

- rapid breathing
- redness in mouth
- sweaty feet
- stumble/stagger
- excess grooming
- restlessness
- drooling
- vomiting
- lethargy
- panting

HOW TO PREVENT HEATSTROKE



KEEP PETS COOL in the shade, especially if they have certain predisposing conditions like older age, obesity, heart disease or breathing issues.



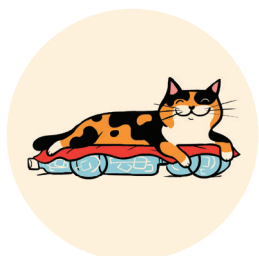
PROVIDE ACCESS to fresh water at all times and make sure outside pets have access to shaded areas.



ON A HOT DAY, restrict exercise and avoid places like the beach and concrete or asphalt areas. Do not muzzle your dog on hot and humid days.



WET YOUR DOG DOWN with cool (NOT ICE) water, or allow him/her to swim.

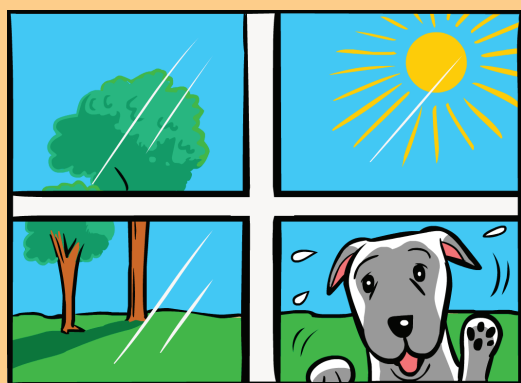


TO HELP PETS COOL OFF, freeze water bottles or fill resealable bags with ice and water. Wrap them in towels for your pets to lay on.



DO NOT leave your pet in a hot car, even if parked in the shade or gone for a short time.

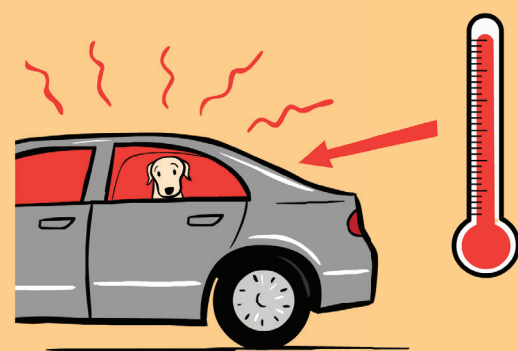
HEATSTROKE OCCURS WHEN PETS...



HAVE NO ACCESS TO SHADE OR WATER...



ARE EXERCISED...



ARE LEFT IN CARS (EVEN ON A 70° DAY)...

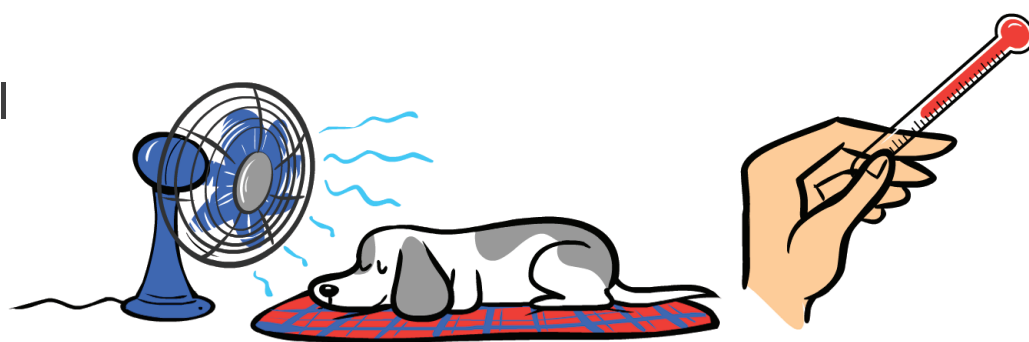
IN HOT OR HUMID WEATHER.



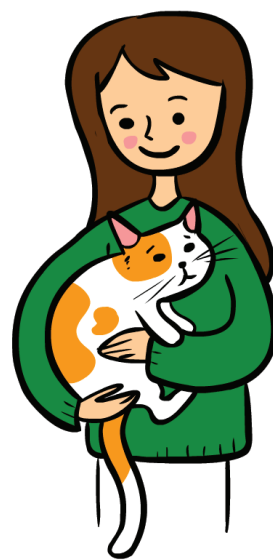
in case of **HEATSTROKE:**

WHAT TO DO:

DO move your pet to a shaded/cool environment. If possible, determine their temperature and record it.



DO cool the body by wetting your pet down and placing a fan on them or exposing them to a breeze.



DO take your pet to the nearest veterinary facility immediately.



WHAT NOT TO DO:

DON'T use very cold water or ice for cooling.



DON'T over-cool your pet's body.

DON'T force water down your pet's mouth, but do have fresh water available for them.



DON'T leave your pet unattended.

A note about **DOGS WITH SHORT FACES:** Brachycephalic dogs, like pugs and boxers, are the most likely candidates for heatstroke due to the structure of their airways and the inability of passing air quickly over the tongue through panting to keep their bodies cool.



TEXAS
VETERINARY MEDICAL
FOUNDATION

